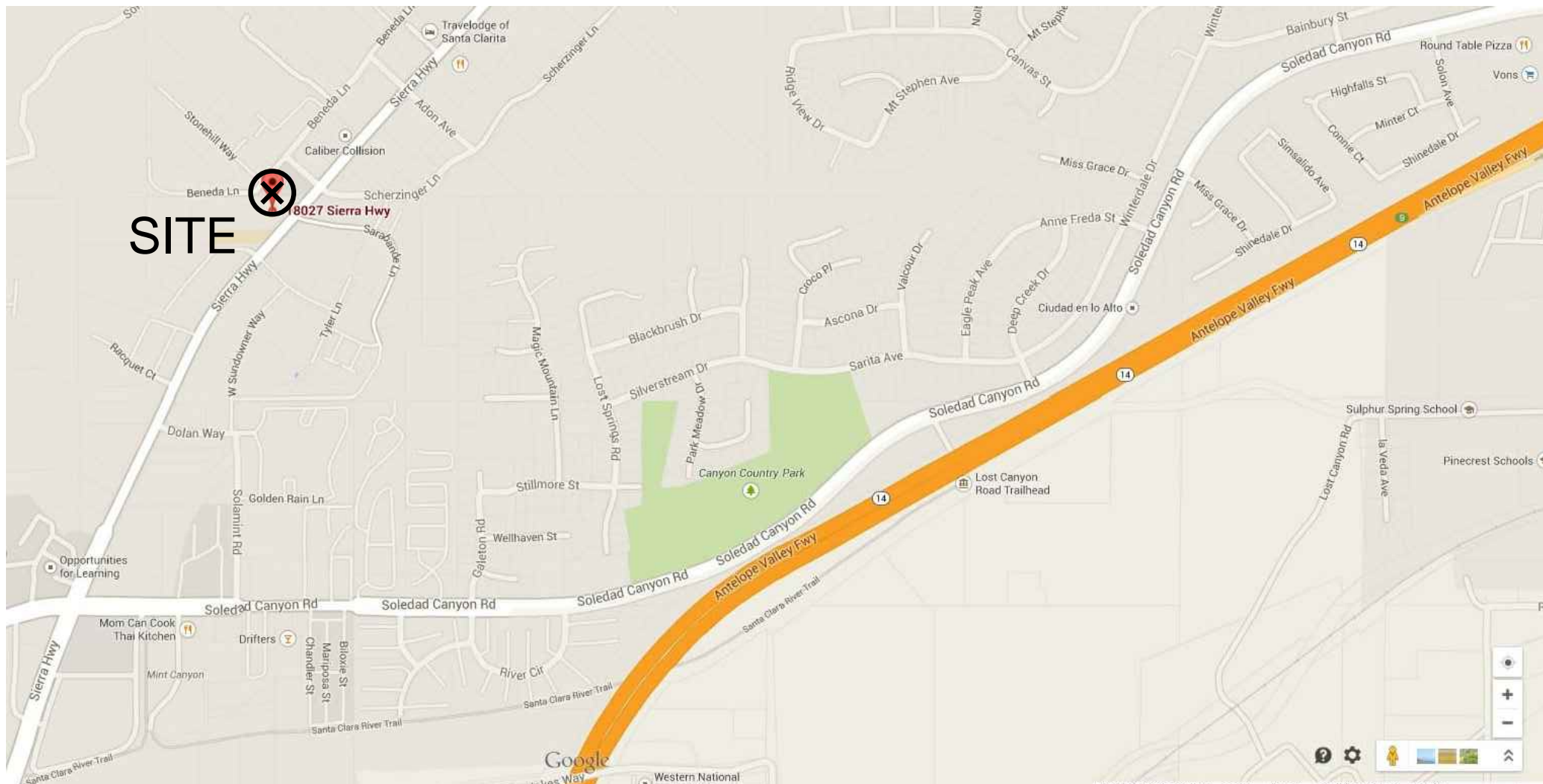


# AL UMMMA CENTER OF THE SC VALLEY COMMERCIAL LANDSCAPE IMPROVEMENT PLANS

## VICINITY MAP (N.T.S.)



## GENERAL LANDSCAPE NOTES

1. CONTRACTOR SHALL INSTALL ALL IMPROVEMENTS IN ACCORDANCE WITH THE **OWNER'S** REQUIREMENTS. IN CASE OF DISCREPANCY BETWEEN THESE PLANS AND THE **OWNER'S** REQUIREMENTS, THE MOST STRINGENT REQUIREMENT WILL APPLY.
2. CONTRACTOR SHALL VISIT THE SITE AND VERIFY ALL CONDITIONS PRIOR TO SUBMITTING A PROPOSAL OF COST FOR CONSTRUCTION.
3. CONTRACTOR SHALL READ THESE PLANS AND NOTES COMPLETELY AND BRING ANY DISCREPANCIES TO THE ATTENTION OF THE LANDSCAPE ARCHITECT IMMEDIATELY UPON DISCOVERY & PRIOR TO THE COMMENCEMENT OF ANY FURTHER WORK.
4. EXTRA WORK TO BE APPROVED IN WRITING BY THE **OWNER** PRIOR TO COMMENCEMENT OF WORK.
5. IT IS THE RESPONSIBILITY OF THE SUB-CONTRACTORS TO FAMILIARIZE THEMSELVES WITH ALL GRADE DIFFERENCES, LOCATION OF WALLS, UTILITIES, **SEWERS**, WATER MAINS, ETC. COORDINATE WORK WITH OTHER SUB-CONTRACTORS FOR THE LOCATION AND INSTALLATION OF PIPE SLEEVES UNDER PAVING, ELECTRICAL CONNECTIONS, WATER HOOK-UPS, ETC.
6. ALL REQUIREMENTS OF THE UNIFORM BUILDING CODE SHALL APPLY TO THE WORK SPECIFIED HEREIN UNLESS OTHERWISE MODIFIED BY THESE DOCUMENTS.
7. CONTRACTOR SHALL OBTAIN ALL PERMITS REQUIRED TO COMPLETE THE WORK SPECIFIED.
8. CONTRACTOR TO NOTIFY UNDERGROUND SERVICE ALERT AT 811 48 HOURS PRIOR TO ANY EXCAVATION.
9. CONTRACTOR SHALL NOTIFY THE **OWNER** 48 HOURS PRIOR TO STARTING CONSTRUCTION.
10. CONTRACTOR TO COORDINATE A PRE-CONSTRUCTION MEETING ON SITE 48 HOURS PRIOR TO START OF CONSTRUCTION. NOTIFY **OWNER, OWNER'S** REPRESENTATIVE AND ALL SUB-CONTRACTORS.
11. CONTRACTOR TO SUBMIT REQUESTS FOR MEETINGS, OBSERVATIONS, AND APPROVALS BY THE LANDSCAPE ARCHITECT AT LEAST 48 HOURS PRIOR TO THE DATE AND TIME PROPOSED.
12. OBTAIN THE **OWNER'S** INSPECTOR'S APPROVAL OF WORK IN PROGRESS AT VARIOUS TIMES DURING CONSTRUCTION. THE FOLLOWING REVIEWS/MEETINGS ARE MANDATORY. PROVIDE 48 HOURS NOTICE FOR EACH REQUESTED VISIT.

- \* PRE-JOB CONFERENCE
- \* CONSTRUCTION STAKING
- \* MAIN LINE PRESSURE TEST AND TRENCH DEPTHS PRIOR TO BACKFILL OF TRENCHES
- \* COVERAGE TEST UPON COMPLETION OF SPRINKLER INSTALLATION
- \* PLANT MATERIAL LOCATION REVIEW
- \* PLANT MATERIAL APPEARANCE AND QUALITY REVIEW
- \* FINAL WALK THROUGH (AT COMPLETION OF PLANTING INSTALLATION)
- \* FINAL WALK THROUGH (AT COMPLETION OF MAINTENANCE PERIOD)

DIRECT ANY QUESTIONS REGARDING THESE PLANS TO :

Charles H. STRAWTER Design Inc.  
566 W. LANCASTER BLVD., STE 20  
LANCASTER CA, 93534

office: (661)295-4631 | fax: (661)244-4911 |  
e-mail: [charles@chstrawterdesign.com](mailto:charles@chstrawterdesign.com)  
[www.chstrawterdesign.com](http://www.chstrawterdesign.com)

## LANDSCAPE ARCHITECT'S NOTICE TO CONTRACTORS

The existence and location of any underground utility pipes or structures shown on these plans were obtained by a search of the available records. To the best of our knowledge there are no existing utilities except those shown on these plans. The contractor is required to take due precautionary measures to protect the utility lines shown and any other lines not of record or not shown on this drawing. Prior to excavation the contractor shall call underground service alert, toll free, at 1-800-422-4133 to verify the location of underground utilities.

Date \_\_\_\_\_

## STATEMENT OF RESPONSIBILITY

The landscape architect signing these plans is responsible for assuring the accuracy and acceptability of the work hereon. In the event of discrepancies arising during construction, the landscape architect shall be responsible for determining an acceptable solution determining and revising the plans for approval by the City.

THE LOCATIONS OF UTILITIES SHOWN ARE APPROXIMATE.  
BEFORE STARTING EXCAVATION, THE CONTRACTOR MUST CONTACT:  
UNDERGROUND SERVICE ALERT  
1-800-422-4133

## SHEET INDEX

#	<u>SHEET</u>	<u>CONTENTS</u>
1	LT-001	TITLE SHEET
2	LT-002	WATER EFFICIENCY NOTES
3	LI-101	LANDSCAPE IRRIGATION PLAN
4	LI-201	LANDSCAPE IRRIGATION DETAILS
5	LI-202	LANDSCAPE IRRIGATION DETAILS
6	LP-101	LANDSCAPE PLANTING PLAN
7	LP-201	LANDSCAPE PLANTING DETAILS
8	LF-101	LANDSCAPE FUEL MODIFICATION PLANS

REFER TO ENGINEER'S PLANS, DETAILS AND SPECIFICATIONS FOR ALL GRADING AND SITE DOCUMENTATION (EXISTING AND PROPOSED CONDITIONS).

## CONTACTS

LANDSCAPE ARCHITECT  
CHARLES H. STRAWTER DESIGN INC.  
Charles H. Strawter, Principal—Landscape Architect  
Phone: (661)295-4631  
Fax: (661)244-4911  
28005 Smyth Drive, Suite 175  
Valencia, CA 91355  
E-MAIL: Charles@chstrawterdesign.com

Engineer

Hanbali & Associates

514 Commerce Ave #C Palmdale, CA 93551  
OFFICE: (661) 266-0421

Property Owner

Al Umma Center of Santa Clarita Valley,  
Contact: Majub Elarabi  
18027 Sierra Hwy, Santa Clarita, CA 91351  
Tel. (661) 219-3820



## CITY APPROVAL


SIGNATURE

DATE \_\_\_\_\_

REVISIONS	BY
-	

**C H A R L E S H. S T R A W T W E R D E S I G N I N C.**  
Landscape Architecture & Urban Design Consulting  
566 W. Lancaster Blvd., Ste. 2D  
Lancaster, CA 93534

RLA | ISA  
charles@charleshstrawtedesign.com  
Ph: 661.295-4031 | Fax: 661.244-4911  
ISA Certified Arborist #WE-7181A  
CA Registered Prof. Landscape Arch. #1334



**PROJECIAL ADDITION**  
**IRRIGATION PLANS**

PROJECT:

CLIENT: Al Umma Center of the SC Valley  
18027 Sierra Hwy, Santa Clarita, CA 91351

**CONTACT:** Majub Elarabi, Tel. (661) 219-3820



JOB NO. CSD1184-14

0.475	0.480
-------	-------

SCALE: PER PLAN

DRAWN: CHS

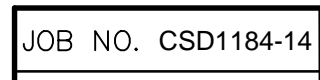
SHEET:

LT-001

01 OF 08 SHEETS



<p>PROJECT:</p> <p><b>COMMERCIAL ADDITION</b> LANDSCAPE &amp; IRRIGATION PLANS</p>	<p>SUBMITTAL: AGENCY SUBMITTAL</p>
----------------------------------------------------------------------------------------	------------------------------------



SCALE: PER PLAN

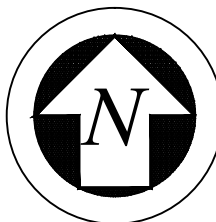
QUEST	
-------	--

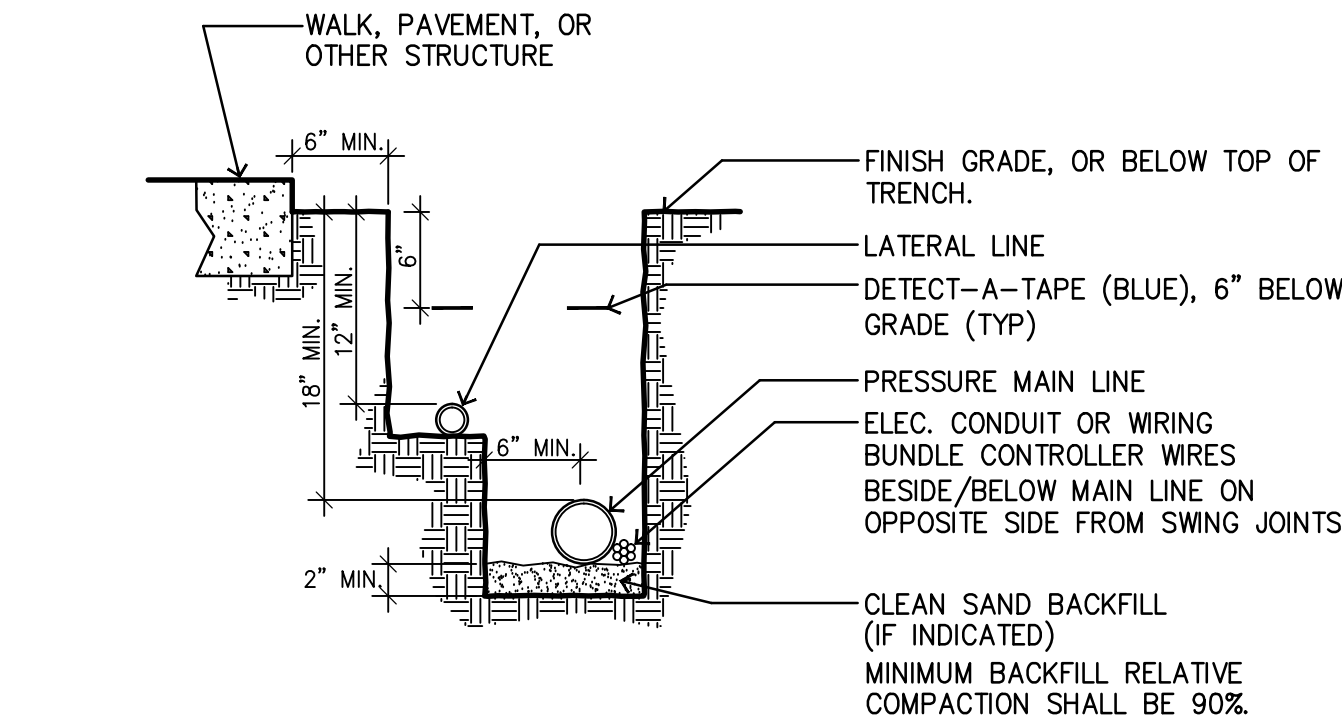
LI-101

03 OF 08 SHEETS



IRRIGATION LEGEND					IRRIGATION PIPE SIZING CHART SCH. 40 PIPE (GPM @ 5 FT/SEC) PIPE SIZE GPM 1/2" 0-4 GPM 3/4" 7 GPM 1" 12 GPM 1-1/4" 22 GPM 1-1/2" 30 GPM 2" 50 GPM CONTRACTOR SHALL SIZE ALL LATERAL PIPE ACCORDING TO THIS SIZING LEGEND, UNLESS SUBSTITUTING FOR LARGER PIPE SIZES.
DESCRIPTION	MODEL#	SYM.	DETAIL	NOTES	
'RAINBIRD' 4 STATION IRRIGATION CONTROLLER	ESP-SMT4	(C)	IF	COORDINATE THE LOCATION OF THE NEW WALL MOUNTED CONTROLLER W/ OWNER	
'RAINBIRD' NORMALLY CLOSED 1" WATER VALVE	100-0B-R-PRS-D		II	BRASS AUTOMATIC GLOBE VALVE (COMMERCIAL GRADE)	
'RAINBIRD' AUTOMATICALLY CLOSED 3/4" WATER VALVE	300-PEE		ID	SIZE PER PLAN	
'RAINBIRD' VALVE BOX	VB-STD		PU,LU,UP		
'NIBCO' 2" BRONZE BALL VALVE	1-500-70-66-ST		I+II	250 PSI SWP, 2-PIECE BRONZE BODY, FULL PORT, SS STEM, SS BALL, THREADED CONNECTION	
WILKINS' PRESSURE REGULATOR	70-DU		IE	--	
EXISTING WATER METER					
'RAINBIRD' 3/4" CHECK-CLOSURE VALVE	AS-DUC		II	BRASS, 125 PSI PRESSURE RATING, LOCKING WYPO CAL	
'TBOCO' BACKFLOW PREVENTER	825-VA		IE	REDUCED PRESSURE PRINCIPLE BACKFLOW PREVENTER, BRONZE "Y" STRAINER W/ MIN. 30 MESH SCREEN. BACK FLOW DEVICE SHALL BE WRAPPED /WINTERIZED.	
ELECTRICAL PULL BOX			--		
DISTRIBUTION SYSTEM COMPONENTS					
DESCRIPTION	MODEL#	SYM.	DETAIL	PRESSURE NOTES	
'RAINBIRD' PC FULL-CIRCLE BUBBLES	1401		IB	20-90 PSI 0.25 GPM   INSTALL ON SCH.40 RISER PER DETAIL	
'RAINBIRD' RWS ROLL WATERING SERIES	PRS-M-8-1402-SOCK		IC	20-90 PSI 0.50 GPM	
IRRIGATION PIPE					
DESCRIPTION	SYM.	NOTES	DETAIL		
SLEEVING SCH. 40 P.V.C.	-----	TWICE LINE SIZE (MIN.)	IA, IM		
PRESSURE LINE SCH 40 P.V.C.	-----	2"	IA, IM		
NON-PRESSURE LINE SCH. 40 P.V.C.	-----	SEE CHART FOR SIZE	IA, IM		
LEGEND NOTES					
1) FOR FLOWS BELOW 10 GPM, RAINBIRD RECOMMENDS THE FLOW CONTROL SYSTEM BE TURNED DOWN TWO FULL TURNS FROM THE FULLY OPEN POSITION.					
SUBSURFACE DRIP LEGEND					
'RAINBIRD' CONTROL ZONE KIT W/ PR FILTER XCZ-OTSPRF			IG		
'RAINBIRD' DRIP SYSTEM OPERATION INDICATOR			U		
'RAINBIRD' MANUAL FLUSH VALVE			IA, IM		
NON-PRESSURE 1" SCH. 40 PVC HEADER			IK		
'RAINBIRD' XFS-09-18-500 (MAX. SINGLE LATERAL LENGTH = 294 LF @ 20 PSI)				TECHLINE CV DRIPPER FLOW: 0.28 GPM; DRIPPER INTERVAL: 18" FLOW PER 100 LF: 28 GPM LATERAL ROW SPACING: 16", BURRY: EVENLY 4"-6" DEEP APPLICATION RATE: 0.19 W/HR. TO APPLY 4" OF WATER TO 1/4 MI., COVERS 900 S.F.	

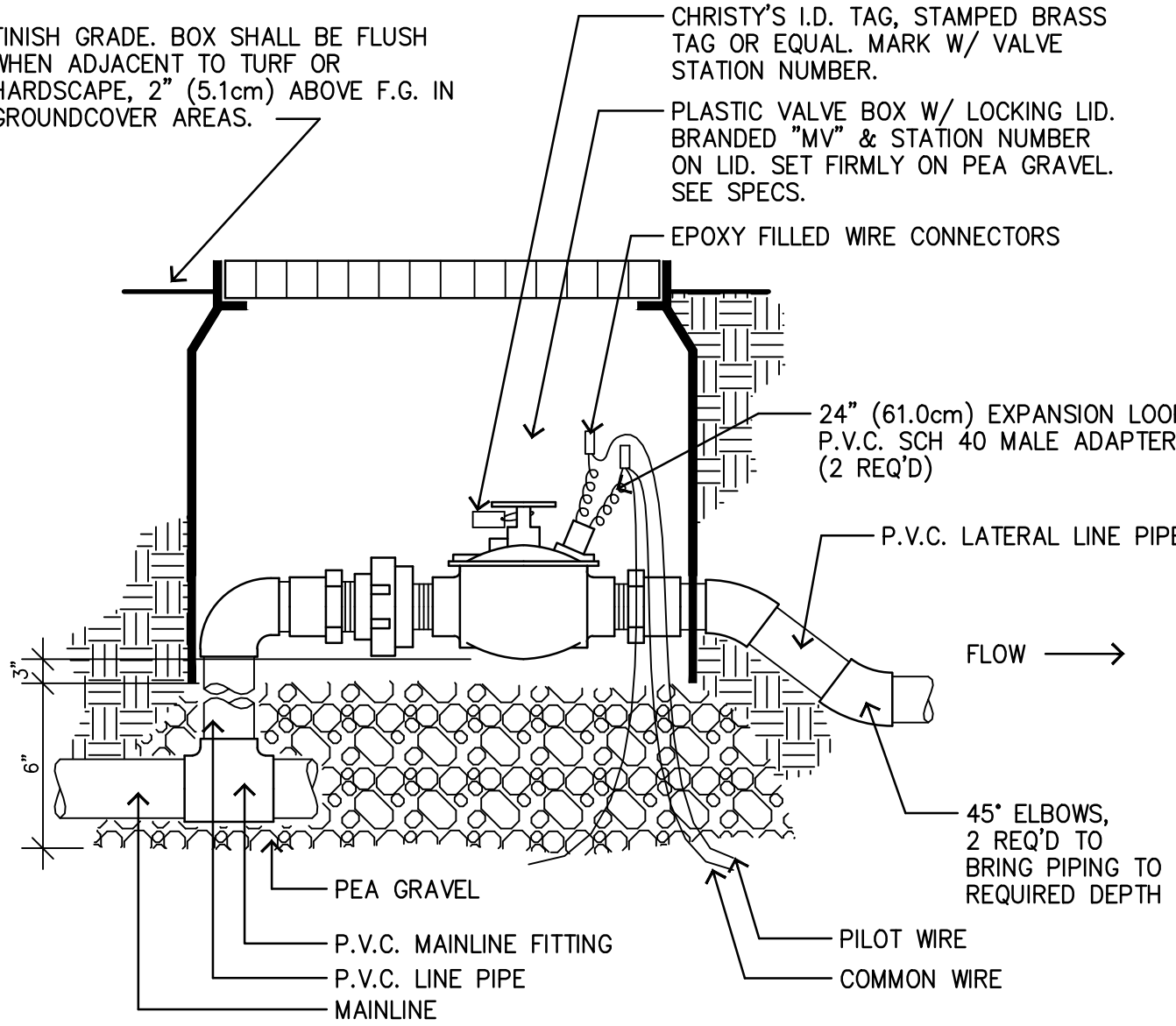




- NOTES:
1. ALL PLASTIC PIPING TO BE SNAKED IN TRENCHES
  2. BUNDLE & TAPE CONTROL WIRES AT 10' INTERVALS
  3. TIE A LOOSE 20" LOOP IN WIRING AT CHANGE OF DIRECTION GREATER THAN 30'. UNTIE ALL LOOPS AFTER ALL CONNECTIONS HAVE BEEN MADE.
  4. UNDER PAVED AREAS, ALL PRESSURE LINES & WIRES SHALL BE SLEEVED W/ SCH. 80 P.V.C. PIPE & SHALL BE 24" IN DEPTH (MIN.)
  5. INSTALL ALL CONTROL WIRES ON UNDERSIDE OF MAINLINE PIPE
  6. PIPE DEPTH FOR 2-1/2" AND LARGER SHALL BE 24" MINIMUM.
  7. PIPE DEPTH FOR 2" AND SMALLER SHALL BE 18" MINIMUM.
  8. PIPE DEPTH FOR ALL NON-PRESSURE LATERAL LINES SHALL BE 12" MINIMUM.

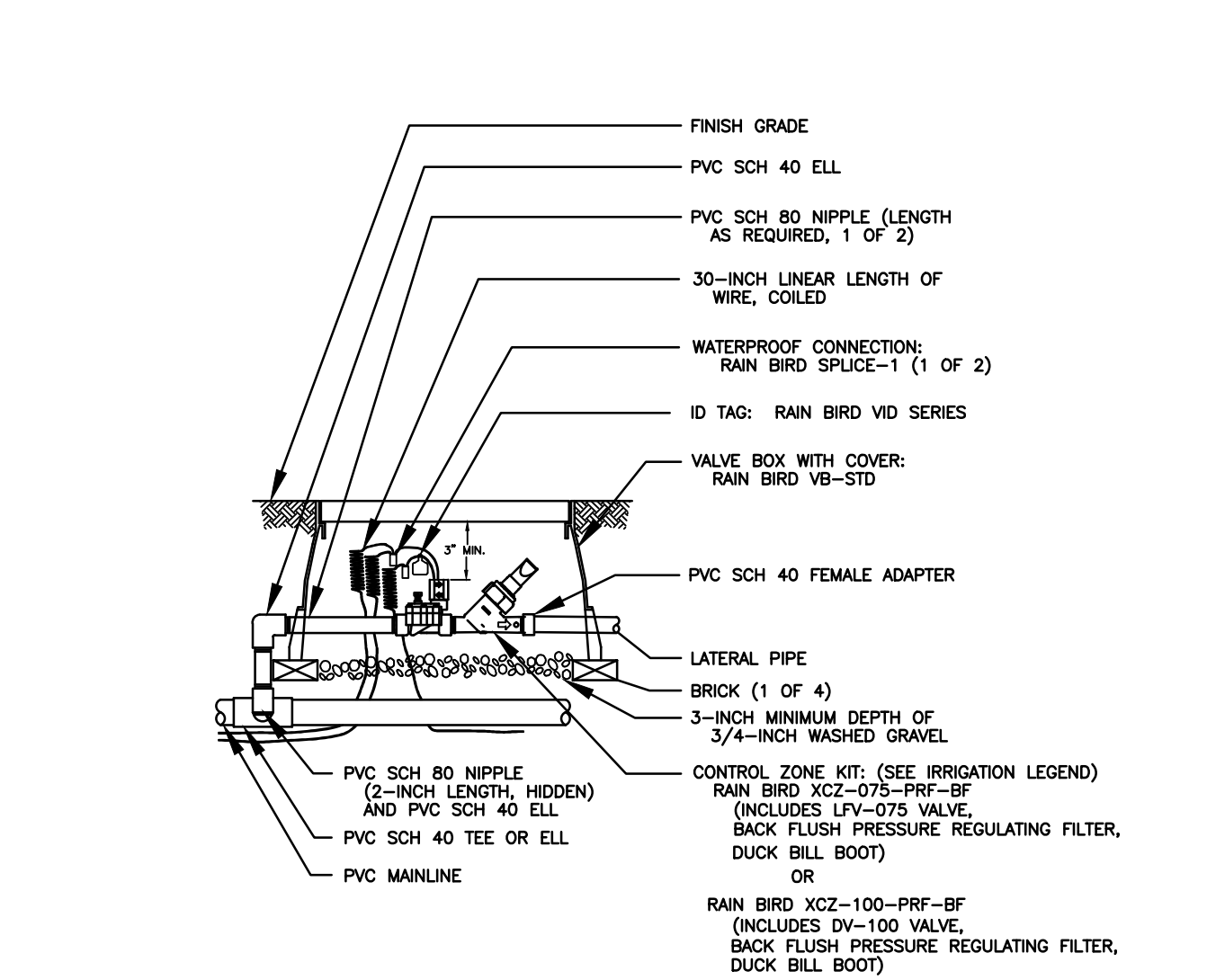
**IA TRENCHING DETAIL**

SCALE: N.T.S.  
FILE: D\_IJRR002



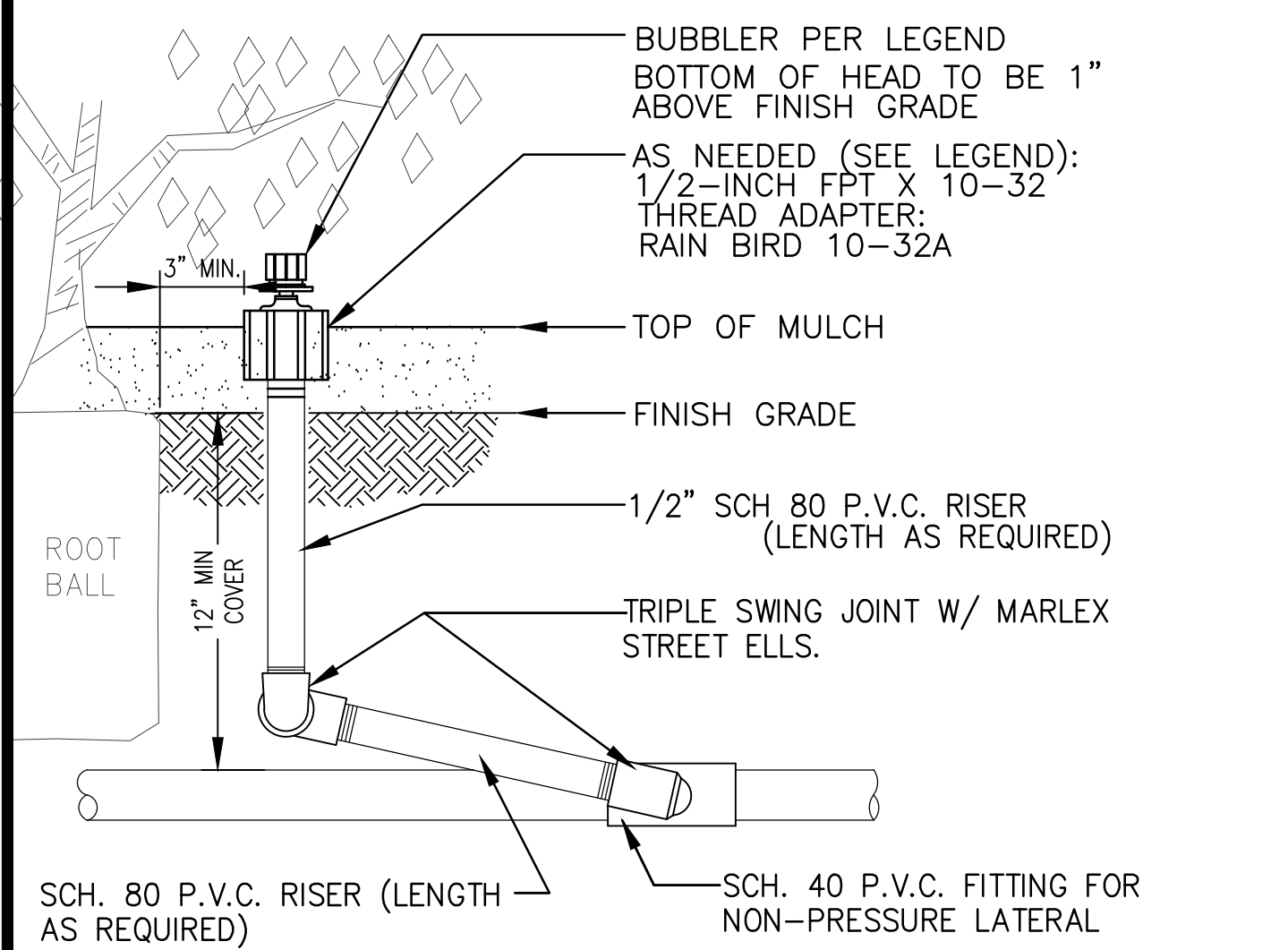
**ID CONTROL VALVE**

SCALE: N.T.S.  
FILE: D\_IJRR004



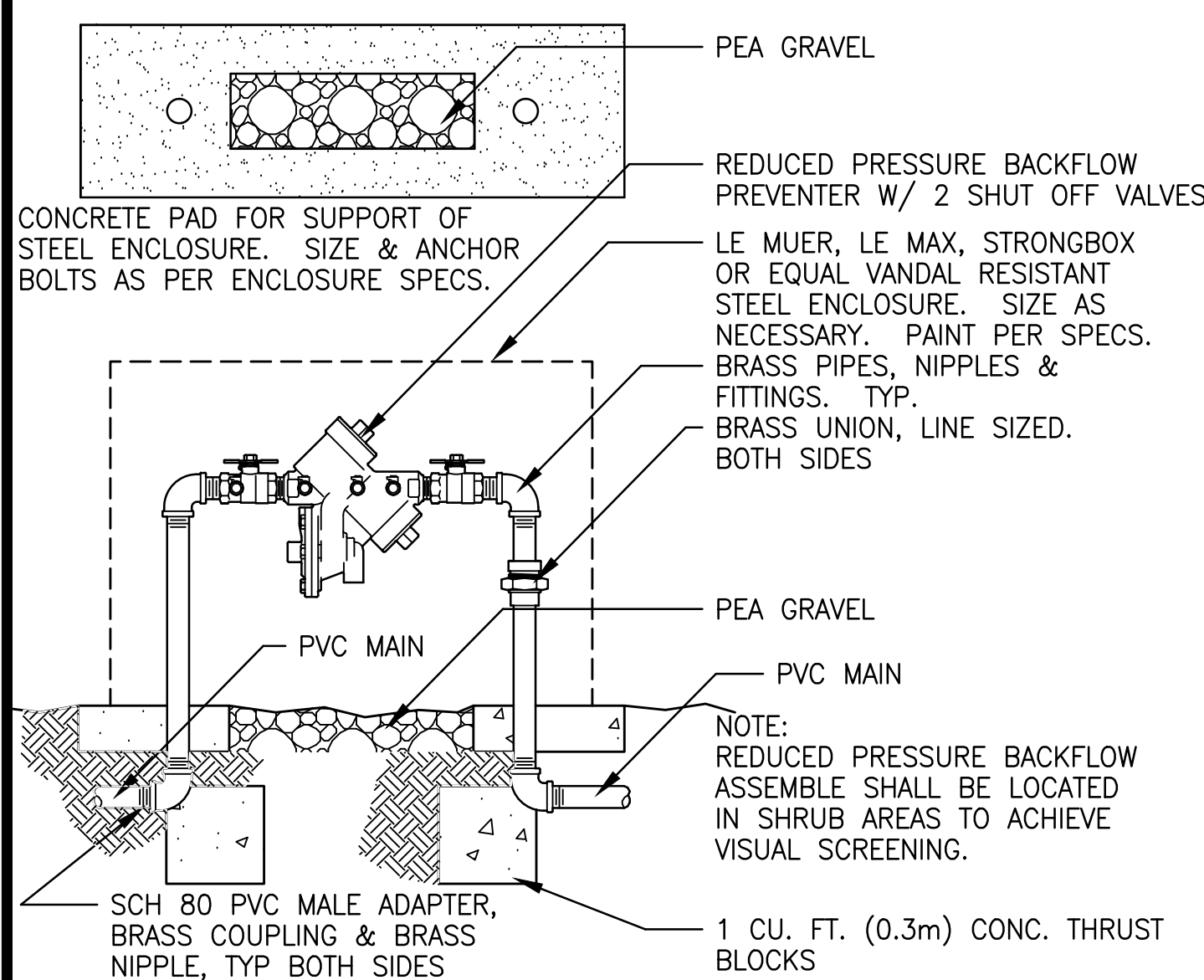
**IG CONTROL ZONE KIT** XCZ-075-PRF-BF

SCALE: N.T.S.  
FILE: D\_IJRR-DRIP07



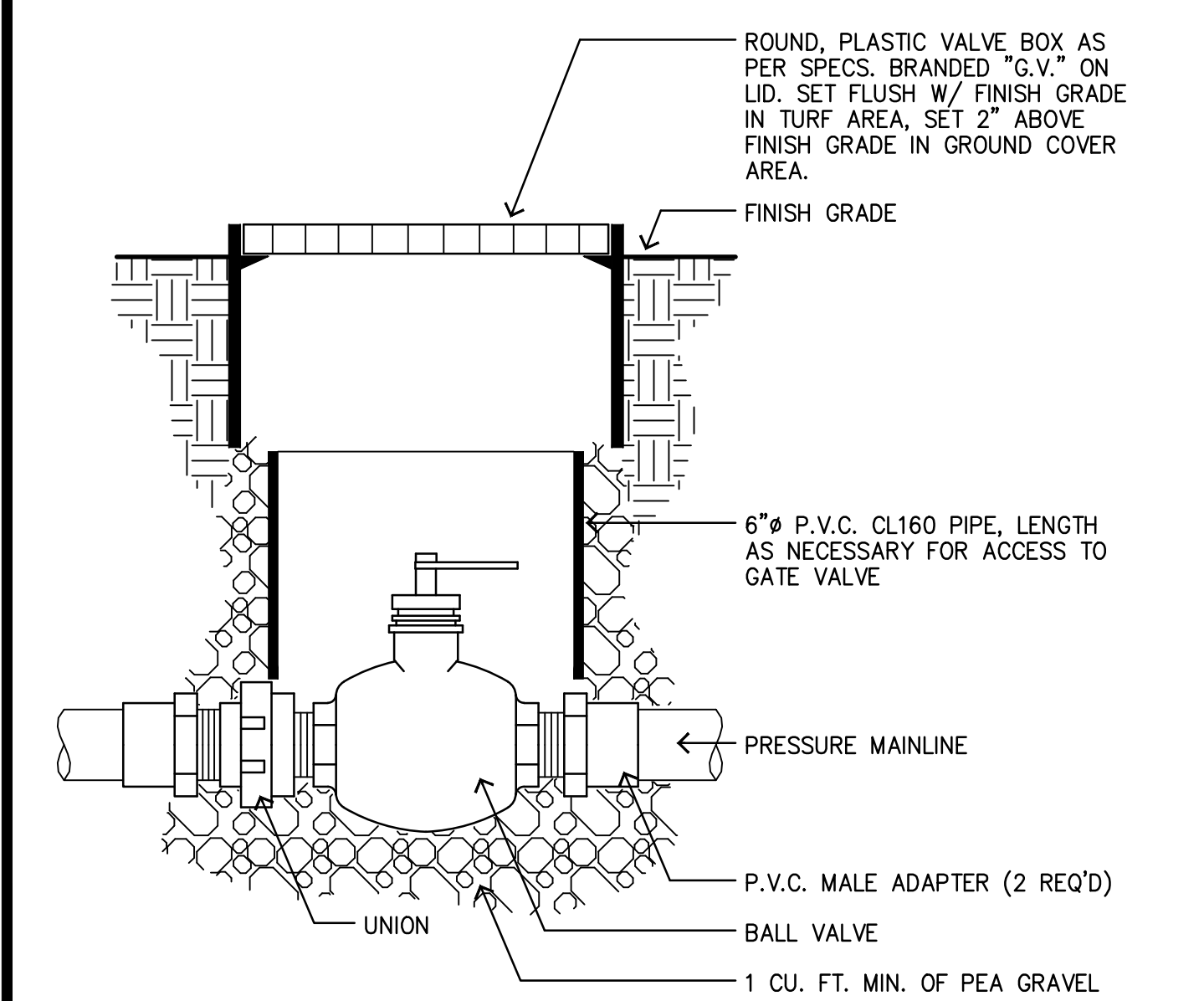
**IB POINT SOURCE SHRUB BUBBLER**

SCALE: N.T.S.  
FILE: D\_IJRR-DRIP01



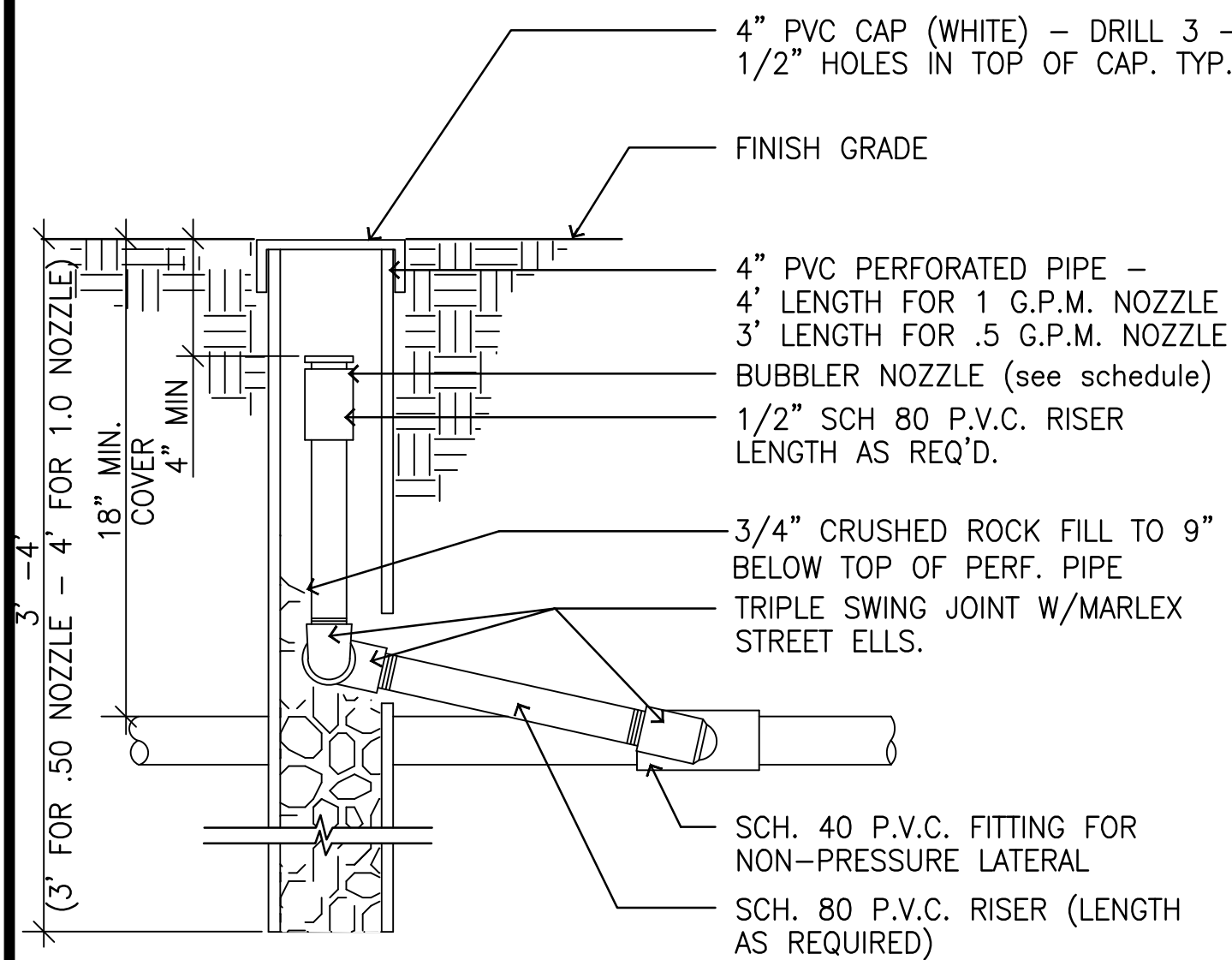
**IE BACKFLOW PREVENTER**

SCALE: N.T.S.  
FILE: D\_IJRR006



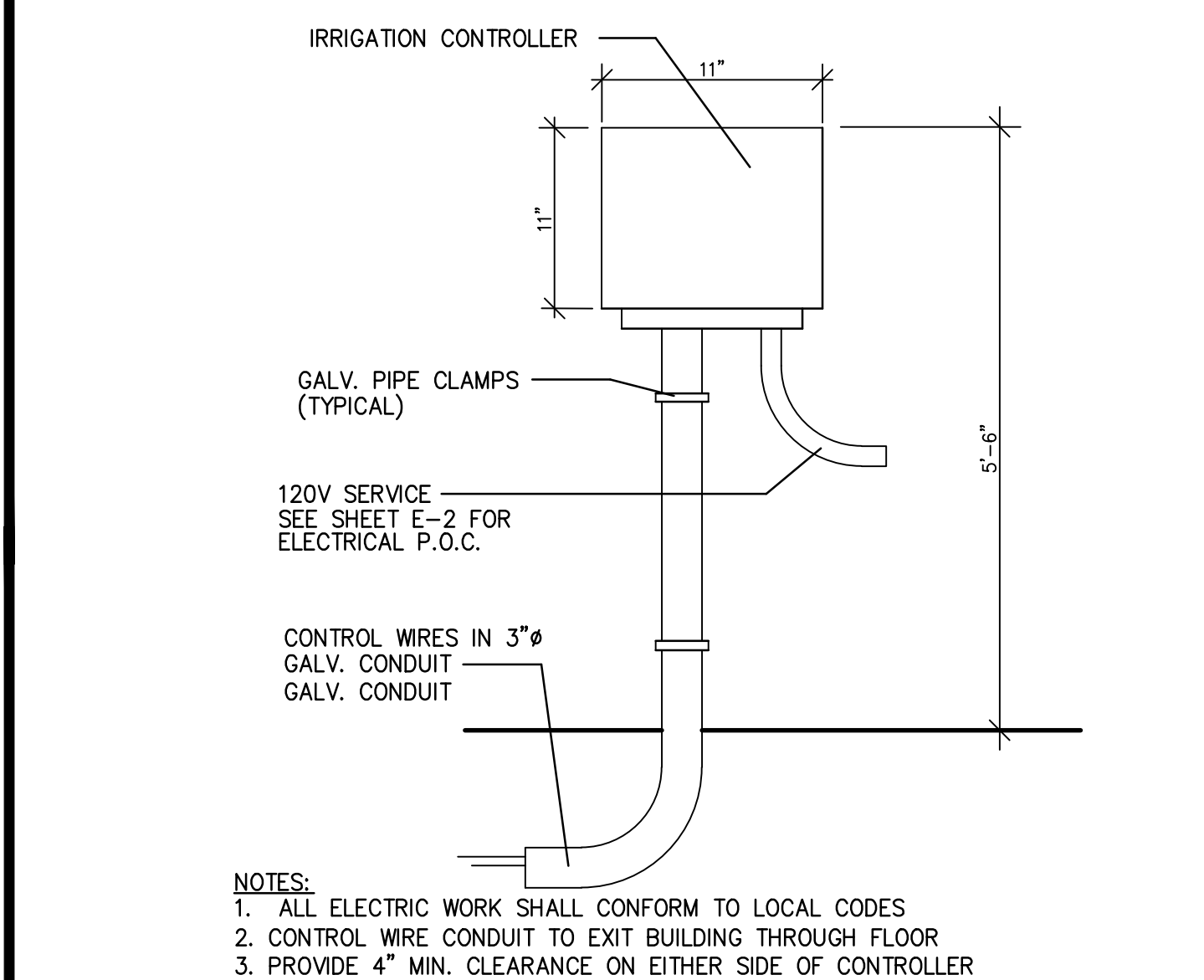
**II BALL VALVE**

SCALE: N.T.S.  
FILE: D\_IJRR003



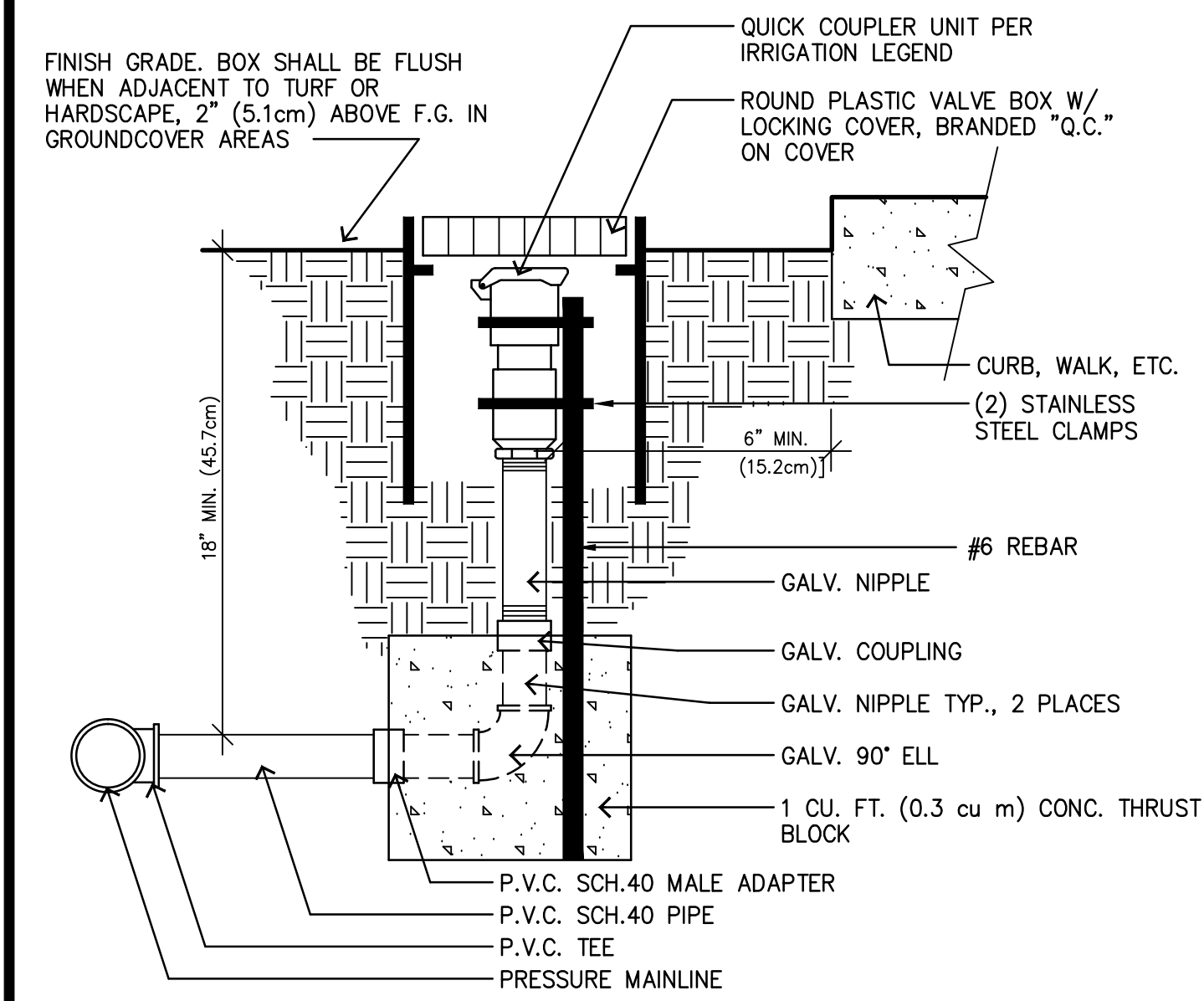
**IC TREE BUBBLER**

SCALE: N.T.S.  
FILE: D\_IJRR023



**IF WALL MOUNT CONTROLLER**

SCALE: N.T.S.  
FILE: D\_IJRR008



**IH QUICK COUPLER**

SCALE: N.T.S.  
FILE: D\_IJRR005

REVISIONS	BY

CHARLES H STRAWER DESIGN, INC.  
Landscape Architecture  
18007 Sierra Hwy, Suite 201  
San Jose, CA 95131  
408.254.1111  
chstrawerdesign.com

RLA 15A  
Professional Seal  
Ira Certified Arborist #0627381A  
LA Registered Prof. Landscape Arch. #1314

SUBMITTAL AGENCY SUBMITTAL

PROJECT: COMMERCIAL ADDITION  
LANDSCAPE & IRRIGATION PLANS

SHEET TITLE: LANDSCAPE IRRIGATION DETAILS

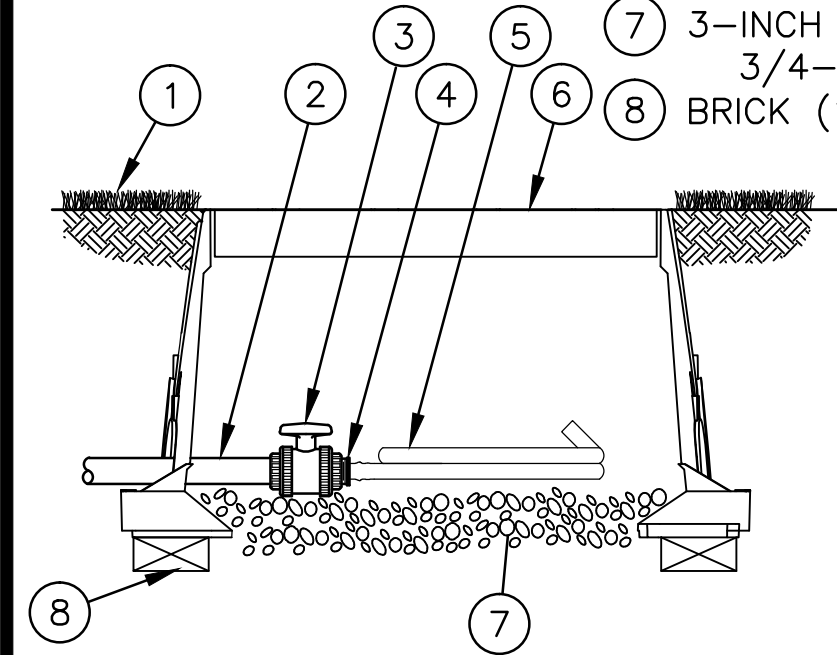
CLIENT: Al Umma Center of the SC Valley  
18027 Sierra Hwy, Santa Clara, CA 91351

CONTACT: Majid Elarabi, Tel. (661) 219-3820

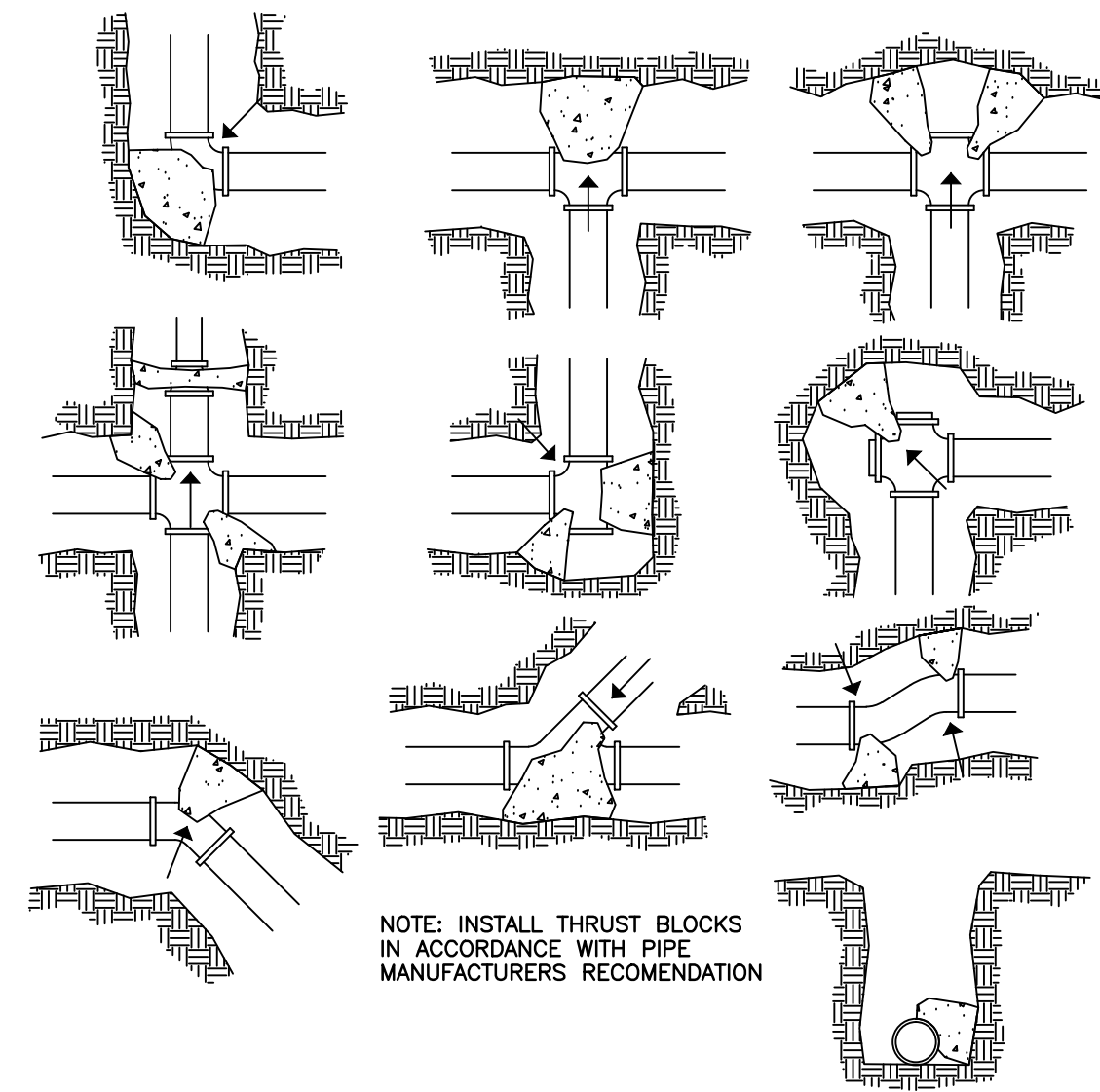


JOB NO. CSD1184-14
DATE: 01-30-2015
SCALE: PER PLAN
DRAWN: CHS
SHEET: LI-201
04 OF 08 SHEETS

- 1 FINISH GRADE/TURF
- 2 PVC DRIP MANIFOLD PIPE
- 3 PVC 1" X 3/4" TRUE UNION BALL VALVE
- 4 EASY FIT MIPT X BARB ADAPTER:  
RAIN BIRD XFD-MA-075
- 5 LANDSCAPE DRIPLINE TUBING:  
RAIN BIRD XF SERIES BLANK TUBING
- 6 12-INCH VALVE BOX WITH COVER:  
RAIN BIRD VB-STD
- 7 3-INCH MINIMUM DEPTH OF  
3/4-INCH WASHED GRAVEL
- 8 BRICK (1 OF 2)



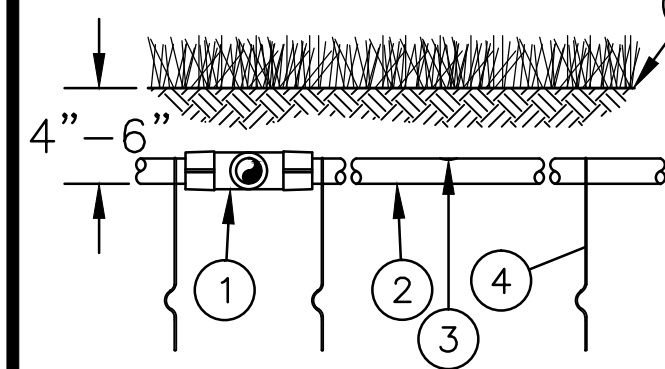
**IJ** XF-SDI SUB-SURFACE DRIPLINE  
FLUSH POINT W/BALL VALVE  
SCALE: N.T.S.  
FILE: D\_IRR-DRIP11



NOTE: INSTALL THRUST BLOCKS  
IN ACCORDANCE WITH PIPE  
MANUFACTURERS RECOMMENDATION

**IM** THRUST BLOCK  
SCALE: N.T.S.  
FILE: D\_IRR010.DWG

- 1 EASY FIT COMPRESSION TEE:  
RAIN BIRD MDCFTTE
- 2 LANDSCAPE DRIPLINE TUBING:  
RAIN BIRD XF-SDI SERIES  
DRIPLINE
- 3 EMITTER
- 4 TIE DOWN STAKE: RAIN BIRD  
TDS-050 WITH BEND (TYPICAL)
- 5 TURF/FINISH GRADE



NOTES:  
1. PLACE TIE DOWN STAKES EVERY THREE FEET IN SAND, FOUR FEET IN LOAM, AND FIVE FEET IN CLAY.  
2. AT FITTINGS WHERE THERE IS A CHANGE OF DIRECTION SUCH AS TEES OR ELBOWS, USE TIE-DOWN STAKES ON EACH LEG OF THE CHANGE OF DIRECTION.  
3. INSERTION PLOW AND TRENCHED INSTALLATIONS DO NOT REQUIRE TIE DOWN STAKES.

**IK** XF-SDI SUB-SURFACE DRIPLINE  
SCALE: N.T.S.  
FILE: D\_IRR-DRIP09

REVISIONS	BY

CHARLES H. STRAWTER DESIGN, INC.  
Landscape Architecture  
18027 Sierra Hwy, Suite 201  
Santa Clarita, CA 91351  
Ph: 661-382-0000  
Fax: 661-382-0001  
CA Registered Prof. Landscape Arch. #1034

RLA 15A  
04/05/2015  
charles@charlesstrawterdesign.com  
www.charlesstrawterdesign.com  
IRRA Certified Landscape Architect #00277818A

SUBMITTAL: AGENCY SUBMITTAL

PROJECT: COMMERCIAL ADDITION  
LANDSCAPE & IRRIGATION PLANS

SHEET TITLE: LANDSCAPE IRRIGATION DETAILS

CLIENT: Al Umma Center of the SC Valley  
18027 Sierra Hwy, Santa Clarita, CA 91351  
CONTACT: Majid Elarabi, Tel. (661) 219-3820

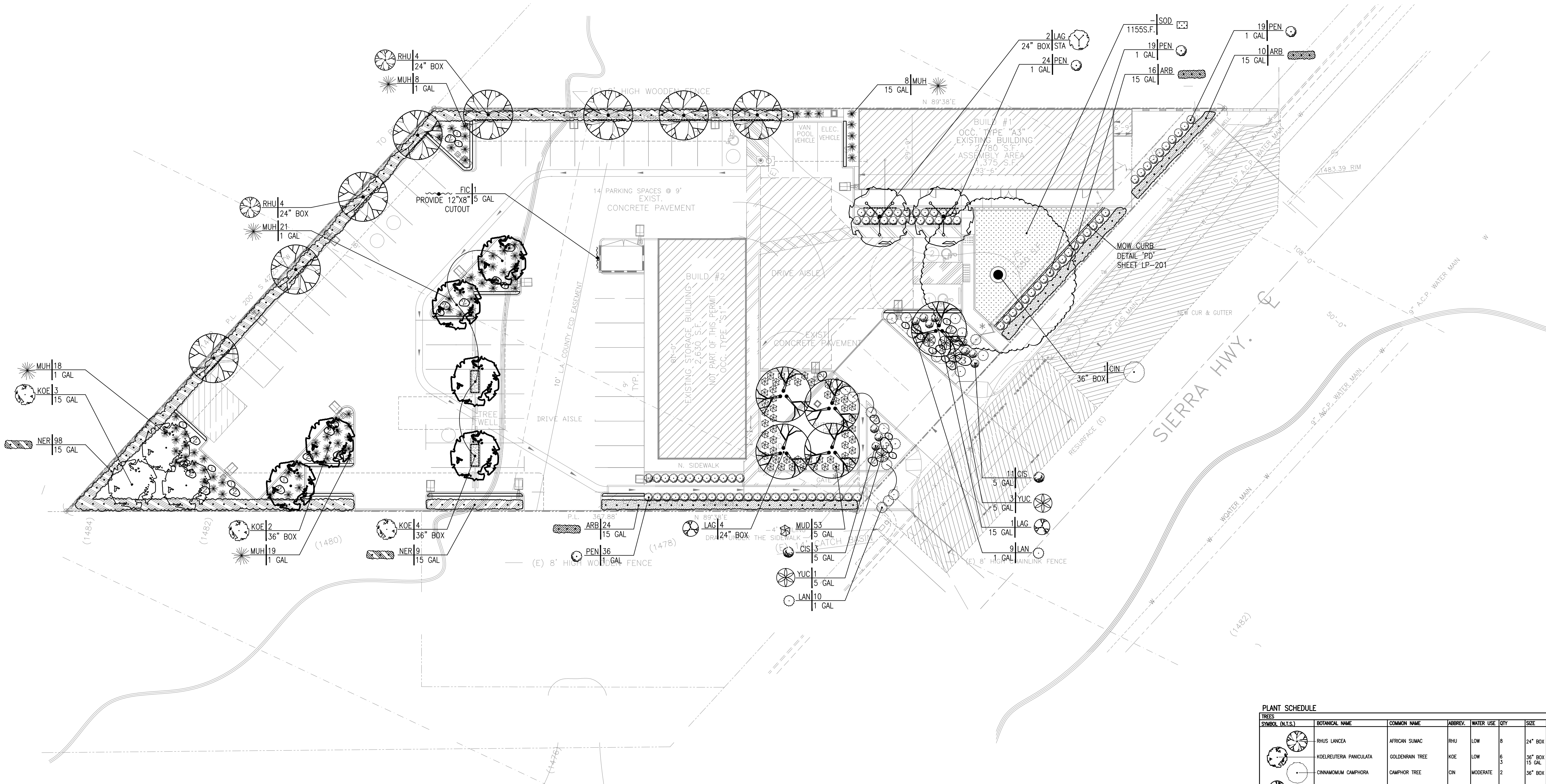
JOB NO. CSD1184-14

DATE: 01-30-2015

SCALE: PER PLAN

DRAWN: CHS

SHEET:  
**LI-202**  
05 OF 08 SHEETS



PLANT SCHEDULE											
TREES											
SYMBOL (N.T.S.)	BOTANICAL NAME	COMMON NAME	ABBRV.	WATER USE	QTY	SIZE	MATURE WIDTH	MATURE HEIGHT	REMARKS	DETAIL	FM ZONES
	RHUS LANCEA	AFRICAN SUMAC	RHU	LOW	8	24" BOX 20'	20'	20'	STANDARD FORM	PA	AB-15
	KOELREUTERA PANICULATA	GOLDENRAIN TREE	KOE	LOW	6	36" BOX 20'	20'	20'	STANDARD FORM	PA	B
	CINNAMOM CAMPHORA	CAMPHOR TREE	CIN	MODERATE	2	36" BOX 50'	50'	50'	STANDARD FORM	PA	B-30
	LAGERSTROEMIA HYBRIDS 'NATCHEZ' MULTI	GRAPE MYRTLE	LAG	MODERATE	5	24" BOX 15'	25'	25'	NATURAL FORM	PA	AB
	LAGERSTROEMIA HYBRIDS 'NATCHEZ' STANDARD	GRAPE MYRTLE	LAG	MODERATE	2	24" BOX 15'	25'	25'	STANDARD FORM	PA	AB
SHRUBS / PERENNIALS											
SYMBOL (N.T.S.)	BOTANICAL NAME	COMMON NAME	ABBRV.	WATER USE	QTY	SIZE	MATURE WIDTH	MATURE HEIGHT	REMARKS	DETAIL	FM ZONES
	NERIUM OLEANDER 'LITTLE RED'	DWARF RED OLEANDER	NER	LOW	109	5 GAL 5'	5'	5'	PLANT 48" O.C.	PB	B
	ARBUSUS UNEDO 'COMPACTA'	DWARF STRAWBERRY TREE	ARB	LOW	50	5 GAL 5'	5'	5'	PLANT 48" O.C.	PB	A, B-5
	MUHLENBERGIA CAPILLARIS	PINK MUHLY	MUH	LOW	71	1 GAL 3'	3'	3'	PLANT 36" O.C.	PB	AB-10
	PENSETUM ALOPECUROIDES 'CASSAN'	FOUNTAIN GRASS	PEN	LOW	98	1 GAL 3'	3'	3'	PLANT 30" O.C.	PB	AB-10
	MUHLENBERGIA DUBIA	PINE MUHLY GRASS	MUD	LOW	53	5 GAL 2'	2'	2'	PLANT 24" O.C.	PB	AB-10
	CISTUS SUNSET	SUNSET ROCKROSE	CIS	VERY LOW	14	1 GAL 3'	3'	3'	PLANT 48" O.C.	PB	B
	YUCCA RECURVIFOLIA 'MARGARITAVILLE'	MARGARITAVILLE 'SOFT LEAF' YUCCA	YUC	LOW	2	1 GAL 6'-10"	6'-10"	6'-10"	PLANT 48" O.C.	PB	B
	FICUS PLUMBA	CREeping FIG	FIC	MODERATE	1	5 GAL	TRAINED	TRAINED	PLANT 36" O.C.	PB	B-
	LANTANA 'SELOWANNA 'NONNA'	WHITE LIGHTNIN LANTANA	LAN	LOW	19	1 GAL 3'-6"	6'-12"	6'-12"	PLANT 24" O.C.	PB	AB- 10
	Marathon II Sod SEE PLANTING NOTES (SHEET LP-101)	TURF GRASS	SOD	HIGH	1155 S.F.	SOD	-	-	-	-	AB
LANDSCAPE MATERIALS											
SYMBOL (N.T.S.)											
	"HIGH DESERT" - NATURAL BOULDERS. BURY 1/3 BELOW GRADE. ARRANGE TO RESEMBLE ROCK OUTCROPS. SEE DETAIL "PD", SHEET LP-201										
	5' X 3.5' DIA. BOULDER. QTY: 2										
	3' X 2' DIA. BOULDER. QTY: 20										
	2' X 1.5' DIA. BOULDER. QTY: 17										
	3" DECOMPOSED GRANITE BEDDING MATERIAL (TREE WELLS)										
	ROOT BARRIERS TO BE INSTALLED 12" LONG, 24" DEEP AT EDGE OF PAVING FOR ALL TREES PLANTED WITHIN 5' OF HOSKAPPE. 24" ROOT BARRIER SHALL BE HIGH DENSITY IMPACT PLASTIC AS AVAILABLE FROM "DEEP ROOT" VESPRO, INC. OR APPROVED EQUAL. SET TOP OF ROOT BARRIER 1/2" ABOVE FINISH GRADE OF SOIL.										
PLANT SCHEDULE NOTES											
1. APPLY A 2" THICK LAYER OF CEDAR MULCH (WALK ON) TO ALL SHRUB PLANTING AREAS.											
2. ALL PLANT SUBSTITUTIONS MUST BE APPROVED BY LANDSCAPE ARCHITECT.											
3. "WATER USE EVALUATION" IS BASED ON WUCOLS IV REGION 4, SUNSET ZONE 18, CALIFORNIA CLIMATE ZONE 9											
4. ROOT BARRIERS TO BE INSTALLED 12" LONG, 24" DEEP AT EDGE OF PAVING FOR ALL TREES PLANTED WITHIN 5' OF HOSKAPPE. 24" ROOT BARRIER SHALL BE HIGH DENSITY IMPACT PLASTIC AS AVAILABLE FROM "DEEP ROOT" VESPRO, INC. OR APPROVED EQUAL. SET TOP OF ROOT BARRIER 1/2" ABOVE FINISH GRADE OF SOIL. INSTALL PER MANUFACTURER'S RECOMMENDATIONS.											

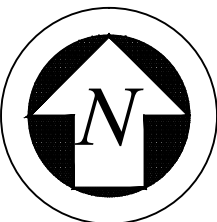
DIAL BEFORE YOU DIG  
1-800-227-2600

DIAL ALERT

AT LEAST TWO  
WORKING DAYS  
PRIOR TO  
EXCAVATING

PLAY IT SAFE.  
DIAL BEFORE  
YOU DIG!

SERVING NINE SOUTHERN CALIFORNIA COUNTIES



REVISIONS	BY

CHARLES H. STRAWTER DESIGN, INC.  
Landscape Architecture  
1807 Sierra Hwy, Santa Clarita, CA 91351  
Ph: 661-219-3820  
Fax: 661-219-3820  
LA Registered Prof. Landscape Arch. 4334

CLAIRB CERTIFIED  
LANDSCAPE ARCHITECT

SUBMITTAL AGENCY SUBMITTAL

PROJECT: COMMERCIAL ADDITION  
LANDSCAPE & IRRIGATION PLANS

SHEET TITLE: LANDSCAPE PLANTING PLAN

CLIENT: Al Umma Center of the SC Valley  
1807 Sierra Hwy, Santa Clarita, CA 91351

CONTACT: Majid Elarabi, Tel. (661) 219-3820



JOB NO. CSD1184-14

DATE: 02-17-2015

SCALE: PER PLAN

DRAWN: CHS

SHEET:  
LP-101

06 OF 08 SHEETS

**WALLACE LABORATORIES, LLC**  
365 Coral Circle  
El Segundo, CA 90245  
phone (310) 615-0116 fax (310) 640-6863

Charles Strawter Design Inc., [charles@chstrawterdesign.com](mailto:charles@chstrawterdesign.com)  
566 West Lancaster Blvd., Suite 20  
Lancaster, CA 93534

Dear Charles,

Nitrogen, potassium, copper, boron and magnesium are high. Boron is 0.85 part per million. Lantana is sensitive to boron over about 0.5 part per million. Phosphorus, iron and manganese are low. Gypsum is present. Total available sodium is modest. SAR (sodium adsorption ratio) is 0.8.

Soil organic matter is low at 0.60% on a dry weight basis.

## Recommendations

General soil preparation on a square foot basis. Broadcast the following materials uniformly. The rates are per 1,000 square feet. Incorporate them homogeneously 6 inches deep. Remove clods, rocks, debris, foreign materials large 1 inch in diameter from the top 6 inches:

## Soil Analyses      Plant Analyses      Water Analyses

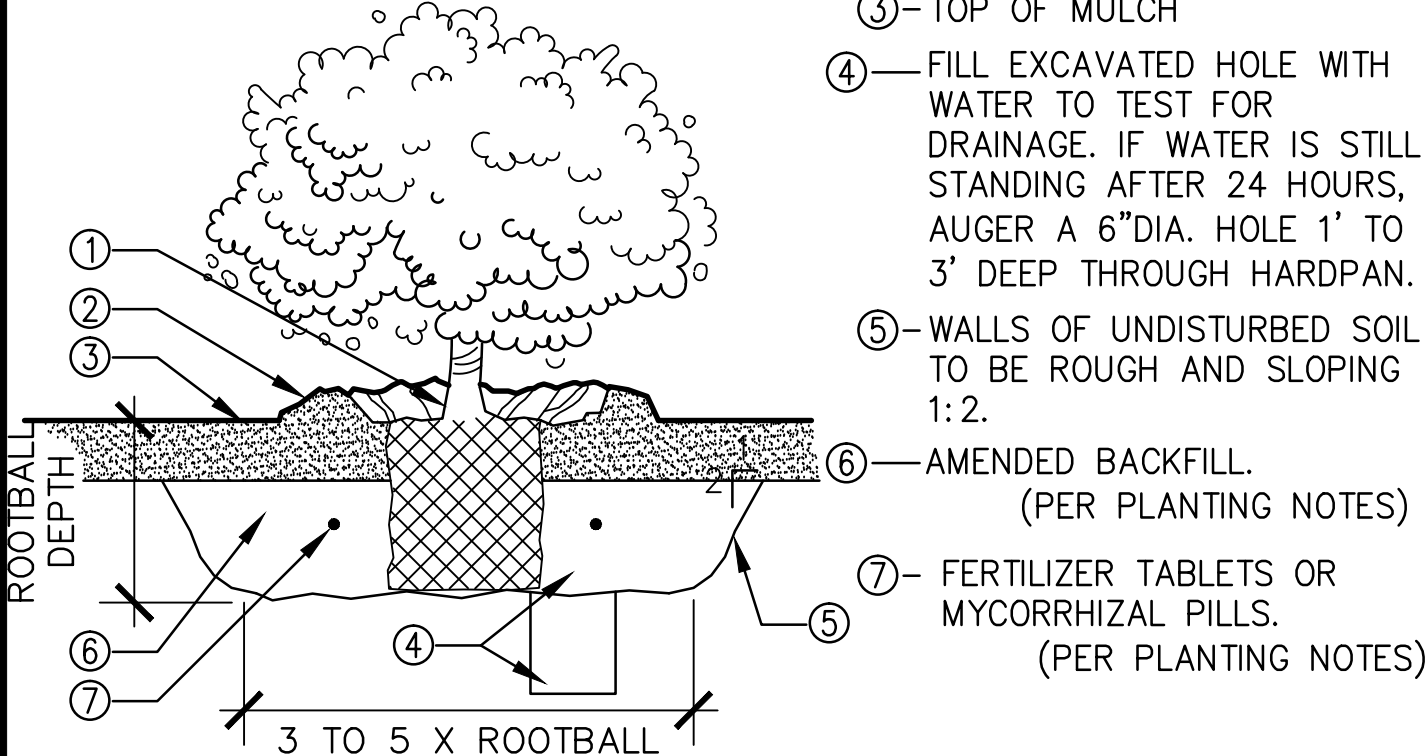
Sincerely,

Garn A. Wallace, Ph. D.  
GAW:n

Soil Analyses   Plant Analyses   Water Analyses


Elements are expressed as mg/kg dry soil or mg/l for saturation extract. pH and ECe are measured in a saturation paste extract. nd means not detected. Analytical data determined on soil fraction passing a 2 mm sieve.

Soil Analyses   Plant Analyses   Water Analyses



**C H S** STRAWTER DESIGN INC.  
Landscape Architecture and Consulting  
566 W. Lancaster Blvd., Ste. 20  
Lancaster, CA 93534

RLA / USA  
charles@chswaterdesign.com  
Ph: 661-295-4631 / Fax: 661-244-4911  
ISSI Certified Arborist AWE-7181A  
CA Registered Prof. Landscape Arch. #9334



JOB NO.	CSD1184-14
DATE:	02-17-2015
SCALE:	PER PLAN
DRAWN:	CHS
SHEET:	<div>LP-201</div> <div>07 OF 08 SHEETS</div>

BANK STABILIZATION

THERE IS NO PROPOSED GRADING FOR THIS PROJECT.

PRIMARY EXISTING SOILS

THE NATIVE PLANT COMMUNITY ON THE SITE IS OAK WOODLAND AND CHAPARRAL. THIS COMMUNITY IS COMPRISED OF VEGETATION THAT GROWS IN COURSE, FAST DRAINING SOIL THAT HAS A NEUTRAL TO ALKALINE PH.

EXISTING VEGETATION

THE SPECIES COMPOSITION ON THE SITE HAS BEEN ALTERED BY A ORNAMENTAL LANDSCAPING AND DEVELOPMENT.

THERE ARE (5) FIVE EXISTING COAST LIVE OAK (QUERCUS AGRIFOLIA) TREES ON THE SITE. THE TREES ARE IN GOOD CONDITION AND WILL NOT BE IMPACTED BY CONSTRUCTION. THE ONLY OTHER NATIVE TREE ON THE SITE ARE (3) THREE MEXICAN ELDERBERRY (SAMBUCUS MEXICANA) TREES. ORNAMENTAL TREES INCLUDE (3) EUCALYPTUS TREES, (4) FOUR PINE TREES, (3) THREE CHINESE ELM TREES, (1) ONE CHERRY TREE, (1) ONE HOLLYWOOD JUNIPER TREE, AND (5) ASH TREES.

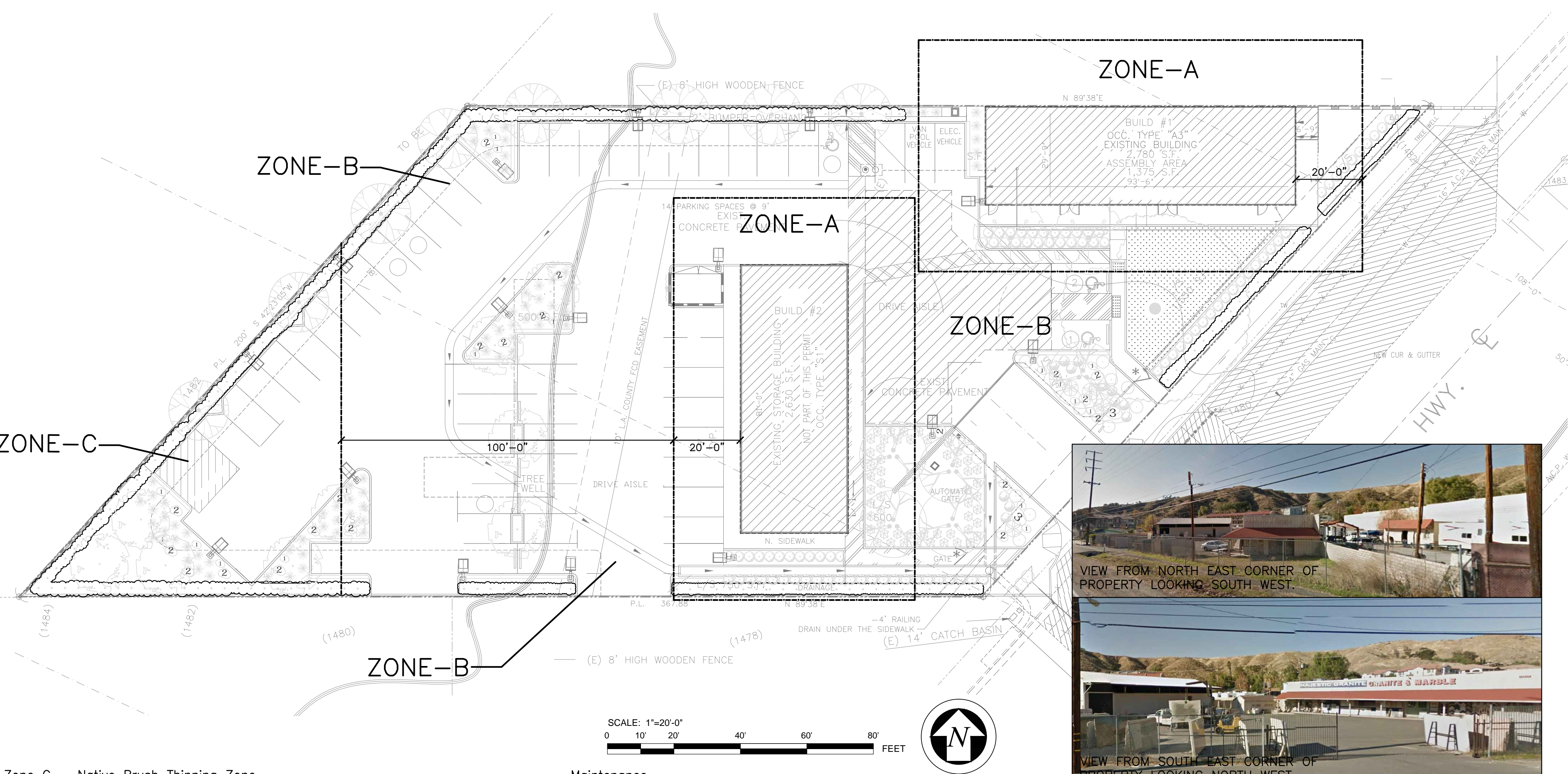
ASSESSMENT NOTES AND MAINTENANCE AGREEMENT FOR FUEL MODIFICATION PLAN #

Zone A – Setback Zone

- Extends 20 feet beyond the edge of any combustible structure, accessory structure, appendage or projection. Overhangs or other parts of the structure not accurately reflected on the plans may negate the approval of plant location on the approved plan.
- Irrigation by automatic or manual systems shall be provided to landscaping to maintain healthy vegetation and fire resistance.
- Landscaping and vegetation in this zone shall consist primarily of green lawns, ground covers not exceeding 6 inches in height, and adequately spaced shrubs. The overall characteristics of the landscape shall provide adequate defensible space in a fire environment.
- Plants in Zone A shall be inherently highly fire resistant and spaced appropriately. Species selection should be made referencing the Fuel Modification Plant List. Other species may be utilized subject to approval. Final or revised Plans submitted after 6 months from the initial submittal will have plants in all zones evaluated based on the most current Fuel Modification Plant List available from the Fuel Modification Unit.
- Except for dwarf varieties or mature trees small in stature, trees are generally not recommended within Zone A.
- Target species will typically not be allowed within 30 or more feet of combustible structures and may require removal if existing on site.
- Vines and climbing plants shall not be allowed on any combustible structure requiring review.

Zone B – Irrigated Zone

- Extends from the outermost edge of Zone A to 50 feet from structure.
- Irrigation by automatic or manual systems shall be provided to landscaping to maintain healthy vegetation and fire resistance.
- Landscaping and vegetation in this zone shall typically consist primarily of green lawns, ground covers, and adequately spaced shrubs and trees.
- Unless otherwise approved, Ground covers shall be maintained at a height not to exceed 6 inches in Zone A and B. If on a slope 12 inches is acceptable in Zone B within 50 feet of a structure and 18 inches beyond 50 feet. The overall characteristics of the landscape shall provide adequate defensible space in a fire environment. Specimen native plants may be approved to remain if properly maintained for adequate defensible space. Annual grasses and weeds shall be maintained at a height not to exceed 3 inches.
- Plants in Zone B shall typically be fire resistant and spaced appropriately. Species selection should be made referencing the Fuel Modification Plant List. Other species may be utilized subject to approval.
- Vegetation in this zone may consist of modified existing native plants, adequately spaced ornamental shrubs and trees, or both. There may also be replacement landscape planting with ornamental or native species to meet minimum slope coverage requirements of City or County agencies or other Landscape or Hillside ordinances. In all cases the overall characteristics of the landscape shall provide adequate defensible space in a fire environment.
- Target species will typically not be allowed within 30 or more feet of combustible structures and may require removal if existing on site. This distance may extend to 50 feet if the situation dictates.
- Irrigation systems are not required for this zone if it consists entirely of native plants. (Native plants are generally not compatible with regular, un-seasonal supplemental water.)
- All trees, unless otherwise approved, shall be planted far enough from structures and Fire Department accesses as to not overhang any structure or access at maturity.



Zone C – Native Brush Thinning Zone

- Extends from the outermost edge of Zone B up to 200 feet from structure or to property line
- Required thinning and clearance will be determined upon inspection. Required clearance may increase to the maximum allowed by the Fire Code as needed because of vegetation growth.
- Irrigation systems are not required for this zone if it consists entirely of native plants. (Native plants are generally not compatible with regular, un-seasonal supplemental water.)
- Vegetation in this zone may consist of modified existing native plants, adequately spaced ornamental shrubs and trees, or both. There may also be replacement landscape planting with ornamental or native species to meet minimum slope coverage requirements of City or County agencies or other Landscape or Hillside ordinances. In all cases the overall characteristics of the landscape shall provide adequate defensible space in a fire environment
- Plants in Zone C shall be spaced appropriately. Existing native vegetation shall be modified by thinning and removal of those species constituting a fire risk. These species include, but are not limited to chamise, sage, sage brush, and buckwheat.
- Annual grasses and weeds shall be maintained at a height not to exceed 3 inches.
- General spacing for existing native shrubs or groups of shrubs is 15 feet between canopies. Native plants may be thinned by reduced amounts as the distance from development increases.
- General spacing for existing native trees or groups of trees is 30 feet between canopies. This distance may increase or decrease depending on the slope, arrangement of the trees in relation to slope, and the species of tree.

FIRE ACCESS ROAD ZONE

- EXTENDS A MINIMUM OF 10 FEET FROM THE EDGE OF ANY PUBLIC OR PRIVATE ROADWAY THAT MAY BE USED AS ACCESS FOR FIRE-FIGHTING APPARATUS OR RESOURCES.
- CLEAR AND REMOVE FLAMMABLE GROWTH FOR A MINIMUM OF 10 FEET ON EACH SIDE OF FIRE ACCESS ROADS. (FIRE CODE 325.10) ADDITIONAL CLEARANCE BEYOND 10 FEET MAY BE REQUIRED UPON INSPECTION.
- FIRE ACCESS ROADS, DRIVEWAYS AND TURNAROUNDS SHALL BE MAINTAINED IN ACCORDANCE WITH FIRE CODE. FIRE ACCESS ROADS SHALL HAVE UNOBSTRUCTED VERTICAL CLEARANCE FOR A WIDTH OF 20 FEET. (FIRE CODE 503.2.1)
- LANDSCAPING AND NATIVE PLANTS WITHIN THE FIRE ACCESS ROAD ZONE SHALL BE APPROPRIATELY SPACED AND MAINTAINED TO PROVIDE SAFE EGRESS IN WILDLAND FIRE ENVIRONMENTS.
- ALL TREES, UNLESS OTHERWISE APPROVED, SHALL BE PLANTED FAR ENOUGH FROM STRUCTURES AND FIRE DEPARTMENT ACCESSSES AS TO NOT OVERHANG ANY STRUCTURE OR ACCESS AT MATURITY.

Maintenance

Routine maintenance shall be regularly performed in all zones. Requirements include but are not limited to those items in the Fuel Modification Guidelines and those outlined below:

- Removal or thinning of undesirable combustible vegetation and removal of dead or dying landscaping to meet minimum brush clearance requirements.
- Pruning and thinning to reduce the overall fuel load and continuity of fuels.
- Fuel loads shall be reduced by pruning lower branches of trees and tree-form shrubs to 1/3 of their height, or 6 feet from lowest hanging branches to the ground, to help prevent fire from spreading and make maintenance easier. Trees with understory plants should be limbed up at least three times the height of the underlying vegetation or up to a height of 40 feet, whichever is less, to help prevent fire from spreading upward into the crown.
- Accumulated plant litter and dead wood shall be removed. Debris and trimmings produced by thinning and pruning should be removed from the site or chipped and evenly dispersed in the same area to a maximum depth of 6 inches.
- All invasive species and their parts should be removed from the site.
- Manual and automatic irrigation systems shall be maintained for operational integrity and programming. Effectiveness should be regularly evaluated to avoid over or under-watering.
- Compliance with the Fire Code is a year-round responsibility. Enforcement will occur following inspection by the Fire Department. Annual inspections for brush clearance code requirements are conducted following the natural drying of grasses and fine fuels, between the months of April and June depending on geographic region. Inspection for compliance with an approved Fuel modification Plan may occur at any time of year.
- Brush Clearance enforcement issues on adjacent properties should be directed to the County of Los Angeles Fire Department's Brush Clearance Unit at (626) 969-2375.
- All future plantings shall be in accordance with the County of Los Angeles Fire Department Fuel Modification Guidelines and approved prior to installation. Changes to the approved plan which require an additional plan review will incur a plan review fee.
- Questions regarding landscape planting and maintenance with regard to fire safety should be directed to the Fire Department's Fuel Modification Unit at (626) 969-5205.

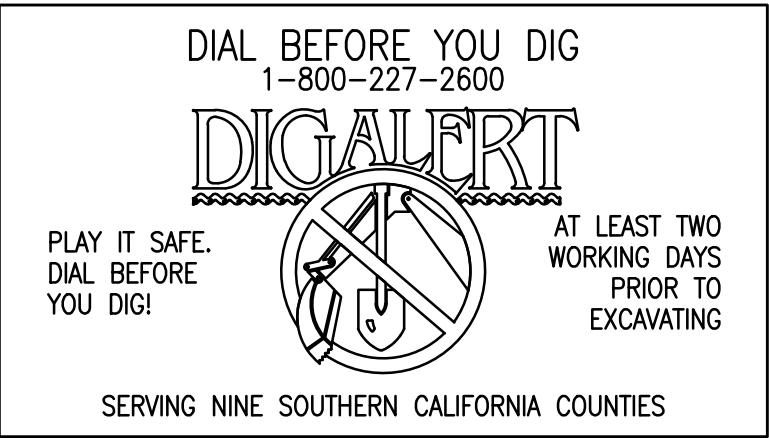
Long Term Maintenance Agreement

The property owner(s) agree to be responsible for the long-term maintenance of this Fuel Modification plan, as described herein. A Covenant & Agreement identifying the applicable Fuel Modification Plan will be recorded on the parcel(s) or CC&R's approved, prior to occupancy being granted. Notification of Fuel Modification requirements is to be made upon sale to new owners. Proposed changes to the Final Fuel Modification plan must be submitted to the Fuel Modification Unit for approval, prior to implementation. Plans will be reviewed based on the current plant list. Regular inspections will be performed by the Fire Department to ensure compliance with the approved plan. Failure to comply with the Fuel Modification Plan requirements may result in an Administrative Fine of at least \$500 per violation, as well as possible liens, assessments, and legal action. Violations may also be corrected at the owners expense with the cost placed on the property tax bill with the addition of an Abatement Enforcement Cost of \$648.

Name (Print) Signature Date

Name (Print) Signature Date

Approval of this Fuel Modification Plan constitutes approval for only those Codes reviewed as part of the Fuel Modification process and does not replace the needed approval of any other office or agency with jurisdiction and review responsibility for those items which may or may not be illustrated on the plan.



REVISIONS	BY

CHARLES H. STRAWER DESIGN, INC.  
Landscape Architecture  
1000 W. Lincoln Blvd., Suite 201  
La Brea, CA 90004  
charles@strawerdesign.com  
310.407.1000  
PBA Certified Arborist PWB/TBA  
LA Registered Prof. Landscape Arch. 4384

RLA 1 EN  
LA Registered Professional Landscape Architect

SUBMITTAL AGENCY SUBMITTAL

PROJECT: COMMERCIAL ADDITION LANDSCAPE & IRRIGATION PLANS

SHEET TITLE: FUEL MODIFICATION PLAN

CLIENT: Al Umma Center of the SC Valley  
18027 Sierra Hwy, Santa Clarita, CA 91351

CONTACT: Majida Elarabi, Tel. (661) 219-4820



CLARB CERTIFIED LANDSCAPE ARCHITECT

JOB NO. CSD1184-14

DATE: 01-30-2015

SCALE: PER PLAN

DRAWN: CHS

SHEET: LF-101

08 OF 08 SHEETS